

Toggle menu
Blue Gold Program Wiki

Navigation

- [Main page](#)
- [Recent changes](#)
- [Random page](#)
- [Help about MediaWiki](#)

Tools

- [What links here](#)
- [Related changes](#)
- [Special pages](#)
- [Permanent link](#)
- [Page information](#)

Personal tools

- [Log in](#)

personal-extra

Toggle search

Search

Random page

Views

- [View](#)
- [View source](#)
- [History](#)
- [PDF Export](#)

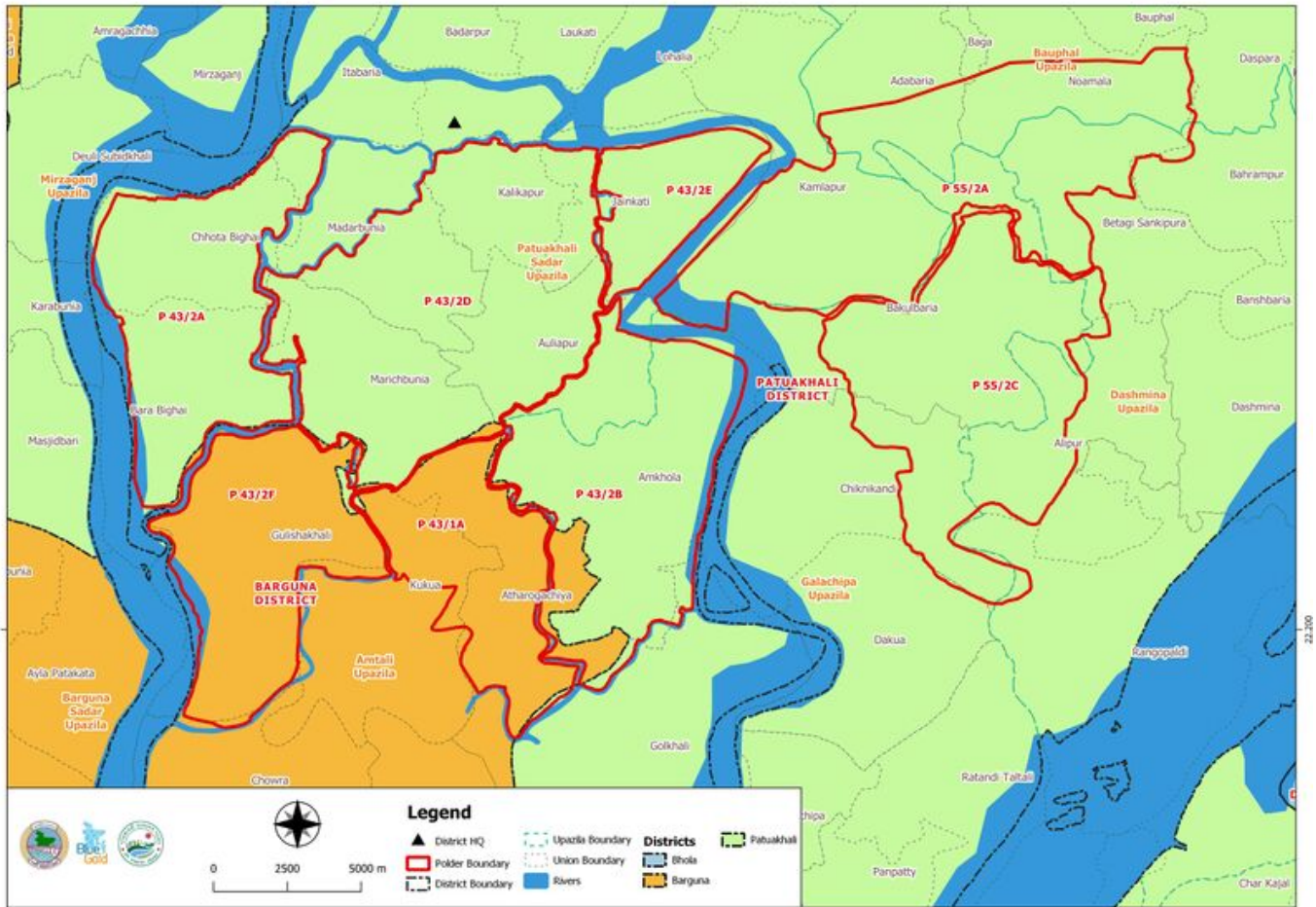
Actions

File:Map - Patuakhali North.jpg

From Blue Gold Program Wiki

The printable version is no longer supported and may have rendering errors. Please update your browser bookmarks and please use the default browser print function instead.

- [File](#)
- [File history](#)
- [File usage](#)




Size of this preview: [800 × 566 pixels](#). Other resolutions: [320 × 226 pixels](#) | [4,960 × 3,507 pixels](#).

[Original file](#) (4,960 × 3,507 pixels, file size: 1.15 MB, MIME type: image/jpeg)

Polder map of Patuakhali North

File history

Click on a date/time to view the file as it appeared at that time.

Date/Time	Thumbnail	Dimensions	User	Comment
current 04:55, 23 November 2020		4,960 × 3,507 (1.15 MB)	Bigblue (talk contribs)	

You cannot overwrite this file.

File usage

The following page uses this file:

- [03 Social, Physical and Environmental Context](#)

Retrieved from

"https://www.bluegoldwiki.com/index.php?title=File:Map_-_Patuakhali_North.jpg&oldid=3834"

Namespaces

- [File](#)
- [Discussion](#)

Variants

This page was last edited on 23 November 2020, at 04:55.

Blue Gold Program Wiki

The wiki version of the Lessons Learnt Report of the Blue Gold program, documents the experiences of a technical assistance (TA) team working in a development project implemented by the Bangladesh Water Development Board (BWDB) and the Department of Agricultural Extension (DAE) over an eight+ year period from March 2013 to December 2021. The wiki lessons learnt report (LLR) is intended to complement the BWDB and DAE project completion reports (PCRs), with the aim of recording lessons learnt for use in the design and implementation of future interventions in the coastal zone.

- [Privacy policy](#)
- [About Blue Gold Program Wiki](#)
- [Disclaimers](#)

Developed and maintained by Big Blue Communications for Blue Gold Program



[Blue Gold Program Wiki](#)