

Toggle menu  
Blue Gold Program Wiki

## Navigation

- [Main page](#)
- [Recent changes](#)
- [Random page](#)
- [Help about MediaWiki](#)

## Tools

- [What links here](#)
- [Related changes](#)
- [Special pages](#)
- [Permanent link](#)
- [Page information](#)

## Personal tools

- [Log in](#)

## personal-extra

Toggle search

Search

Random page

## Views

- [View](#)
- [View source](#)
- [History](#)
- [PDF Export](#)

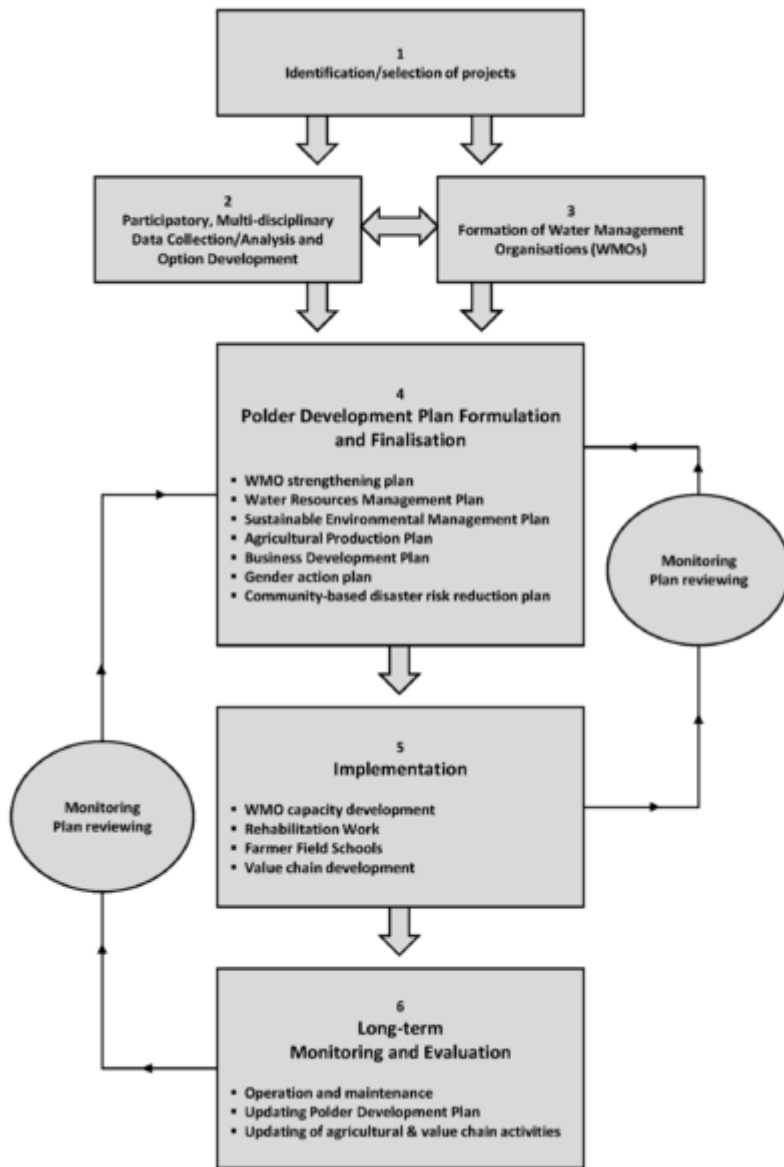
## Actions

# File:Figure 14.1.png

From Blue Gold Program Wiki

The printable version is no longer supported and may have rendering errors. Please update your browser bookmarks and please use the default browser print function instead.

- [File](#)
- [File history](#)
- [File usage](#)



Size of this preview: [400 × 600 pixels](#). Other resolutions: [160 × 240 pixels](#) | [1,890 × 2,835 pixels](#).

[Original file](#) (1,890 × 2,835 pixels, file size: 43 KB, MIME type: image/png)

BGP Polder Development Approach at inception, based on IPSWARM 2008

Blue Gold Program

(Guidelines for) Integrated Planning for Sustainable Water Resources Management

## File history

Click on a date/time to view the file as it appeared at that time.

Date/Time	Thumbnail	Dimensions	User	Comment
-----------	-----------	------------	------	---------

current [15:18, 28 April 2021](#)



1,890 × 2,835 (43 KB)

[Bigblue](#) ([talk](#) | [contribs](#))

Higher resolution (300PPI) render of the diagram from source PPTX file.

[08:02, 24 November 2020](#)



1,250 × 1,915 (1.04 MB)

[Bigblue](#) ([talk](#) | [contribs](#))

You cannot overwrite this file.

## File usage

The following page uses this file:

- [14 Consultation and participation in planning](#)

Retrieved from "[https://www.bluegoldwiki.com/index.php?title=File:Figure\\_14.1.png&oldid=5135](https://www.bluegoldwiki.com/index.php?title=File:Figure_14.1.png&oldid=5135)"

## Namespaces

- [File](#)
- [Discussion](#)

## Variants

This page was last edited on 28 April 2021, at 15:18.

## Blue Gold Program Wiki

The wiki version of the Lessons Learnt Report of the Blue Gold program, documents the experiences of a technical assistance (TA) team working in a development project implemented by the Bangladesh Water Development Board (BWDB) and the Department of Agricultural Extension (DAE) over an eight+ year period from March 2013 to December 2021. The wiki lessons learnt report (LLR) is intended to complement the BWDB and DAE project completion reports (PCRs), with the aim of recording lessons learnt for use in the design and implementation of future interventions in the coastal zone.

- [Privacy policy](#)
- [About Blue Gold Program Wiki](#)
- [Disclaimers](#)

Developed and maintained by Big Blue Communications for Blue Gold Program



[Blue Gold Program Wiki](#)