

Toggle menu  
Blue Gold Program Wiki

## Navigation

- [Main page](#)
- [Recent changes](#)
- [Random page](#)
- [Help about MediaWiki](#)

## Tools

- [What links here](#)
- [Related changes](#)
- [Special pages](#)
- [Permanent link](#)
- [Page information](#)

## Personal tools

- [Log in](#)

## personal-extra

Toggle search

Search

Random page

[Help](#)

## Views

- [View](#)
- [View source](#)
- [History](#)
- [PDF Export](#)

## Actions

# Category:Report

From Blue Gold Program Wiki

The printable version is no longer supported and may have rendering errors. Please update your browser bookmarks and please use the default browser print function instead.

Reports published by or related to Blue Gold Program

## Media in category "Report"

The following 200 files are in this category, out of 292 total.

(previous page) ([next page](#))



- [16jan 19 LCS](#)  
[Guiding Note](#)  
[BANGLA.pdf](#)

1,240 × 1,753;  
245 KB



- [16jan 19 LCS](#)  
[Guiding Note](#)  
[ENGLISH.pdf](#)

1,240 × 1,753;  
243 KB



- [17sep 20 Annual](#)  
[Work Plan](#)  
[2020-21.pdf](#)

1,275 × 1,650,  
145 pages; 4.01  
MB



- [23jan 21 HYPR  
july december  
2020.pdf](#) 1,240  
× 1,754, 62  
pages; 2.03 MB



- [2jun 20 LCS  
report Final  
Formatted.pdf](#)  
1,240 × 1,754,  
74 pages; 1.54  
MB



- [AWP 2014 blue-  
gold-annual-  
plan-2014.pdf](#)  
1,240 × 1,754,  
79 pages; 4.84  
MB



- [AWP 2015 16  
Annual Work  
Plan 2015 - 2016](#)

[14 July 2015.pdf](#)

1,240 × 1,754,  
85 pages; 4.77  
MB



[AWP 2015  
Annual Plan  
2015 v5  
241214.pdf](#)

1,240 × 1,754,  
82 pages; 6.3  
MB



[AWP 2016  
AnnualPlan2016  
17V2.pdf](#)

1,240  
× 1,754, 126  
pages; 9.75 MB



[AWP 2017 18  
BGPAnnualPlan2  
0172018.pdf](#)

1,240 × 1,754,  
171 pages; 6.78  
MB



- [AWP 2018 19](#)  
[Annual Work](#)  
[Plan 2018-2019](#)  
[1aug 18.pdf](#)  
1,240 × 1,754,  
177 pages; 2.84  
MB



- [AWP 2019 20](#)  
[Annual Work](#)  
[Plan 2019-2020](#)  
[10jul 19.pdf](#)  
1,275 × 1,650,  
173 pages; 3.06  
MB



- [B 1 may 15 LCS](#)  
[Training Report](#)  
[Khulna](#)  
[Satkhira.pdf](#)  
1,240 × 1,754,  
12 pages; 1.19  
MB



- [Blue Gold Innovation Fund 2017](#)

[BGIF booklet  
29may 18.pdf](#)  
1,240 × 1,754,  
26 pages; 10.28  
MB



- [BGIF booklet Jan  
2020.pdf](#) 1,240  
× 1,753, 24  
pages; 6.68 MB



- [BGIF Call for  
Proposals -  
Funding Window  
1.pdf](#) 1,275 ×  
1,650, 18 pages;  
229 KB

- [BGIF Procedures  
Manual v8  
22may 18.pdf](#)  
1,240 × 1,754,  
45 pages; 2.41  
MB



- [BGIF QPR Apr-Jun 2015 jul 15.pdf](#) 1,275 × 1,650, 4 pages; 251 KB



- [BGIF QPR Apr-Jun 2016 2sep 16.pdf](#) 1,754 × 1,239, 19 pages; 234 KB



- [BGIF QPR Apr-Jun 2017 9aug 17.pdf](#) 1,754 × 1,240, 31 pages; 616 KB



- [BGIF QPR Apr-Jun 2018 2aug 18.pdf](#) 1,240 × 1,754, 24 pages; 890 KB



- [BGIF QPR Jan-Mar 2015 apr 15.pdf](#) 1,275 × 1,650, 4 pages; 232 KB



- [BGIF QPR Jan-Mar 2017 29may 17.pdf](#) 1,650 × 1,275, 30 pages; 353 KB



- [BGIF QPR Jan-Mar 2018 30apr 18.pdf](#) 1,240 × 1,754, 19 pages; 686 KB



- [BGIF QPR Jan-Mar 2019 18jun 19.pdf](#) 1,240 × 1,754, 15 pages; 502 KB





[BGIF QPR Jul-Sep 2016 29sep16.pdf](#) 1,754 × 1,239, 24 pages; 277 KB



[BGIF QPR Jul-Sep 2017 26oct17.pdf](#) 1,240 × 1,754, 22 pages; 832 KB



[BGIF QPR Jul-Sep 2018 15Oct18.pdf](#) 1,240 × 1,754, 23 pages; 880 KB



[BGIF QPR Oct-Dec 2015 3mar16.pdf](#) 1,240 × 1,754, 21 pages; 658 KB



- [BGIF QPR Oct-Dec 2017 12Feb 18.pdf](#) 1,240 × 1,754, 19 pages; 941 KB



- [BGIF QPR Oct-Dec 2018 15feb 19.pdf](#) 1,240 × 1,754, 17 pages; 479 KB



- [BGIF00 Twynstra&Gudde - study of WMOs as cooperatives.pdf](#) 1,275 × 1,650, 74 pages; 762 KB



- [BGIF01 IWM - Planning design](#)

[and monitoring  
of community  
based WM  
systems in P30  
.Jan2014.pdf](#)  
1,240 × 1,754,  
39 pages; 5.15  
MB



•

[BGIF02 Deltares  
- Feasibility  
pump drainage  
system BG  
Polders  
Dec2014.pdf](#)  
1,275 × 1,650,  
51 pages; 5.27  
MB



•

[BGIF03 IMARES  
WUR Quickscan  
Freswater Pearl  
Culture  
Feasibility 21jan  
15.pdf](#) 1,240 ×  
1,754, 16 pages;  
569 KB



•

[BGIF05 CDI  
WUR -](#)

[Opportunities  
for development  
of the Moringa  
sector](#)

[Jul2015.pdf](#)

1,240 × 1,753,  
49 pages; 1.54  
MB



[BGIF06  
Greystack -  
Feasibility study  
on renewable  
energy](#)

[Dec2015.pdf](#)

1,275 × 1,650,  
44 pages; 7.82  
MB



[BGIF07 World  
Fish - Ecopond  
Project -  
Women-Headed  
Small Household  
Ponds](#)

[28Dec2015.pdf](#)

1,275 × 1,650,  
126 pages; 4.3  
MB



[BGIF08 Acacia -  
Feasibility study  
Aquifer  
Recharge for  
Agriculture  
25feb 15.pdf](#)  
1,240 × 1,754,  
27 pages; 1.6  
MB



•

[BGIF09 nhc  
FRERMIP - Final  
report  
Emergency  
protection works  
P29 23jun 18.pdf](#)  
1,240 × 1,754,  
38 pages; 7.01  
MB



•

[BGIF10 Nice  
Foundation -  
Improved Pig  
Hygiene in  
Kawra  
Community  
13nov 16.pdf](#)  
1,240 × 1,754,  
97 pages; 2.93  
MB



•

[BGIF11 Deltares](#)  
[- Water App tool](#)  
[for water](#)  
[management](#)  
[decision making](#)  
[in P43 2B](#)  
[Jan2017.pdf](#)  
1,240 × 1,754,  
99 pages; 5.39  
MB



[BGIF12](#)  
[MetaMeta -](#)  
[Roads for Water](#)  
[Management](#)  
[and Flood](#)  
[Protection](#)  
[Nov2017.pdf](#)  
1,753 × 1,240,  
30 pages; 24.68  
MB



[BGIF13 MarGen](#)  
[- Promoting](#)  
[Natural Cold](#)  
[Store mar 17.pdf](#)  
1,240 × 1,753,  
56 pages; 3.71  
MB



[BGIF14 FHRC - Pilot Community Based Water Management P43 2 and P29 Sep2017.pdf](#)

1,240 × 1,754,  
41 pages; 3.57 MB



•

[BGIF15 Just Farming - Increasing Quality in Mungbean Production 23oct 17.pdf](#)

1,239 × 1,754,  
21 pages; 640 KB



•

[BGIF16 Aspire-Insectsforall - Fish Feed using Insect Larvae 1nov 17.pdf](#)

1,239 × 1,754,  
85 pages; 902 KB



•

[BGIF17 No9 - Promoting Dutch SME entrepreneurship 23oct 17.pdf](#)  
1,241 × 1,756,  
15 pages; 1.28 MB



•

[BGIF18 Consiglieri - Renewable Energy-Based Solutions 8aug 16.pdf](#)  
1,275 × 1,650, 70 pages;  
2.37 MB



•

[BGIF19 Practical Action - Floating Cage Aquageoponics 8dec 17.pdf](#)  
1,240 × 1,754,  
36 pages; 2.26 MB



•

[BGIF20 WorldFish - Ecopond and](#)



[Empowerment  
Project II 8jan  
18.pdf](#) 1,275 ×  
1,650, 47 pages;  
2.19 MB



[BGIF21  
WorldFish - Low-  
Cost Tilapia  
Feed 30sep  
17.pdf](#) 1,240 ×  
1,754, 39 pages;  
3.32 MB



[BGIF22A United  
Purpose -  
Feasibility Study  
WBCs Khulna  
29oct 17.pdf](#)  
1,275 × 1,650,  
23 pages; 509  
KB



[BGIF22B United  
Purpose Phase II  
WBCs Final 16  
Jan 19.pdf](#) 1,240  
× 1,754, 34  
pages; 1.42 MB



- [BGIF22C 25jun](#)  
[20 Final Report](#)  
[WBC Phase 3](#)  
[United](#)  
[Purpose.pdf](#)  
1,240 × 1,754,  
20 pages; 2.83  
MB



- [BGIF23 SBYA -](#)  
[Blue Gold](#)  
[Innovation](#)  
[Challenge 12dec](#)  
[17.pdf](#) 1,240 ×  
1,754, 28 pages;  
1.23 MB



- [BGIF24 Moringa](#)  
[Ltd - Moringa](#)  
[Business Plan](#)  
[11feb 18.pdf](#)  
1,240 × 1,753,  
31 pages; 1.43  
MB



- [BGIF25](#)  
[ProPortion&](#)  
[GrameenIntel -](#)  
[Commercialising](#)  
[Agricultural](#)  
[Extension](#)  
[Services](#)  
[Feb2018.pdf](#)  
1,239 × 1,754,  
39 pages; 3.22  
MB



- [BGIF26A United](#)  
[Purpose -](#)  
[Feasibility study](#)  
[SWIFT 17apr](#)  
[18.pdf](#) 1,240 ×  
1,754, 57 pages;  
2.36 MB



- [BGIF26B United](#)  
[Purpose SWIFT](#)  
[Phase II](#)  
[Completion](#)  
[Report \(May](#)  
[2018 - Feb 2019\)](#)  
[mar 19.pdf](#)  
1,275 × 1,650,  
37 pages; 4.58  
MB



- [BGIF26C 23jun 20 SWIFT Phase III Final Report United Purpose.pdf](#)  
1,240 × 1,754,  
24 pages; 2.58 MB



- [BGIF27A Innovision - Feasibility Study Pangasius aquaculture 21may 18.pdf](#)  
1,275 × 1,650,  
40 pages; 1,004 KB



- [BGIF27B Innovision Final Report Pangasius aquaculture 31jan 19.pdf](#)  
1,275 × 1,650,  
48 pages; 5.23 MB



[BGIF28](#)  
[BSMRAU P2 Pen](#)  
[Culture mar](#)  
[18.pdf](#) 1,275 ×  
1,650, 30 pages;  
1.58 MB



[BGIF29 mPower](#)  
[breed](#)  
[identification](#)  
[and digital](#)  
[registry FINAL](#)  
[REPORT 11nov](#)  
[19.pdf](#) 1,275 ×  
1,650, 38 pages;  
3.03 MB



[BGIF30](#)  
[MetaMeta-JJS-](#)  
[AA Horizontal](#)  
[Learning](#)  
[Evaluation](#)  
[Report 17feb](#)  
[20.pdf](#) 1,240 ×  
1,754, 22 pages;  
2.35 MB



- [BGIF31 1jun 20  
PCR Sustaining  
Sack Farming  
Practices  
Practical  
Action.pdf](#) 1,240  
× 1,753, 32  
pages; 18.16 MB



- [BGIF32 29nov  
20 Final Report  
BGIF-KU WH  
project.pdf](#)  
1,240 × 1,754,  
50 pages; 1.61  
MB



- [BGIF33 17aug  
20 FINAL  
PROJECT  
REPORT BG  
CAMASMA  
CIMMYT BD.pdf](#)  
1,275 × 1,650,  
37 pages; 2.06  
MB



- [Bgp-llr-call-for-action-8p-v1.7.pdf](#) 1,240 × 1,753, 8 pages; 1.73 MB



- [Bgp-llr-call-for-action-bangla-v1.3.pdf](#) 1,240 × 1,753, 8 pages; 1.88 MB



- [CAWM 26mar 20 gajendrapur design report.pdf](#) 1,240 × 1,754, 39 pages; 3.72 MB



- [CAWM 2nov 20 Case Study gajendrapur bangla.pdf](#) 1,240

× 1,753, 4  
pages; 16.81 MB



•

[DAE logframe  
RDPP sep 18.pdf](#)  
1,240 × 1,754, 2  
pages; 151 KB



•

[DEM Khulna 2,  
26 & 31part  
IWM \(Jul  
2015\).pdf](#) 1,240  
× 1,754, 34  
pages; 3.48 MB



•

[DEM Khulna 25,  
27-1, 27-2, 28-1  
& 28-2 CEGIS  
\(Jan 2018\).pdf](#)  
1,250 × 1,767,  
73 pages; 15.88  
MB



•



[DEM Patuakhali  
43-2A,-43-2B,-43  
-2D-&-43-2E-  
CEGIS-  
\(Nov-2016\).pdf](#)  
1,273 × 1,822,  
89 pages; 5.55  
MB



•

[DEM Patuakhali  
55-2A-&-55-2C-  
CEGIS-  
\(Nov-2015\).pdf](#)  
1,275 × 1,650,  
47 pages; 2.01  
MB



•

[DEM-Khulna 22  
CEGIS-  
\(Nov-2016\).pdf](#)  
1,277 × 1,822,  
21 pages; 1.41  
MB



•

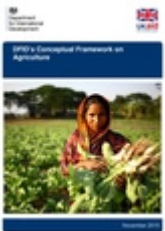
[DEM-Khulna 29-  
&-30-CEGIS-  
\(Jun-2017\).pdf](#)  
1,250 × 1,889,  
66 pages; 4.8  
MB



- [DEM-Patuakhali 43-1A-&43-2F-CEGIS-\(Nov-2016\).pdf](#)  
1,273 × 1,821,  
50 pages; 3.63 MB



- [DEM-Patuakhali-47-3-&47-4-CEGIS-\(Jan-2018\).pdf](#)  
1,250 × 1,793,  
76 pages; 11.96 MB



- [DFID Conceptual Framework on Agriculture.pdf](#)  
1,239 × 1,754,  
36 pages; 2.51 MB



- [CEGIS](#)

[EIA P2 CEGIS  
Jun 16.pdf](#) 1,240  
× 1,754, 251  
pages; 9.51 MB



•

[EIA P22 CEGIS  
Sep 15.pdf](#) 1,240  
× 1,754, 256  
pages; 12.37 MB



•

[EIA P28 1 BWDB  
Sep 19.pdf](#) 1,240  
× 1,754, 170  
pages; 7.9 MB



•

[EIA P28 2 BWDB  
Sep 19.pdf](#) 1,240  
× 1,754, 174  
pages; 7.01 MB



•

[EIA P28-2 jan  
20.pdf](#) 1,240 ×  
1,754, 161

pages; 8.64 MB



[EIA P30 CEGIS](#)  
[Sep 15.pdf](#) 1,240  
× 1,754, 285  
pages; 14.5 MB



[EIA P31 part](#)  
[CEGIS Jun](#)  
[16.pdf](#) 1,240 ×  
1,754, 248  
pages; 33.56 MB



[EIA P34 2 BWDB](#)  
[Sep 19.pdf](#) 1,240  
× 1,754, 190  
pages; 7.54 MB



[EIA P34-2 jan](#)  
[20.pdf](#) 1,240 ×  
1,754, 177  
pages; 9.2 MB



- [EIA P43 1A](#)  
[CEGIS Apr](#)  
[16.pdf](#) 1,240 ×  
1,754, 255  
pages; 12.93 MB



- [EIA P43 2A](#)  
[CEGIS Jun](#)  
[15.pdf](#) 1,240 ×  
1,754, 254  
pages; 15.37 MB



- [EIA P43 2B](#)  
[CEGIS Apr](#)  
[16.pdf](#) 1,240 ×  
1,754, 248  
pages; 14.46 MB



- [EIA P43 2D](#)  
[CEGIS Jun](#)  
[15.pdf](#) 1,240 ×  
1,753, 262  
pages; 16.63 MB



- [EIA P43 2E](#)  
[CEGIS Apr](#)  
[16.pdf](#) 1,240 ×  
1,754, 260  
pages; 9.99 MB



- [EIA P43 2F](#)  
[CEGIS Jun](#)  
[15.pdf](#) 1,240 ×  
1,754, 270  
pages; 15.27 MB



- [EIA P55 2A](#)  
[BWDB Sep](#)  
[19.pdf](#) 1,240 ×  
1,754, 164  
pages; 6.23 MB



- [EIA P55 2A jan](#)  
[20.pdf](#) 1,240 ×  
1,754, 153  
pages; 6.86 MB



•

[EIA Report](#)  
[Polder 25 aug](#)  
[20.pdf](#) 1,240 ×  
1,754, 155  
pages; 10.03 MB



•

[EIA Report](#)  
[Polder 47 3 aug](#)  
[20.pdf](#) 1,240 ×  
1,754, 146  
pages; 7.4 MB



•

[EIA Report](#)  
[Polder 47-4 aug](#)  
[20.pdf](#) 1,240 ×  
1,754, 148  
pages; 7.75 MB



•

[EIA Report](#)  
[Polder 55 2C](#)  
[aug 20.pdf](#) 1,240  
× 1,754, 147  
pages; 8.87 MB



- [EXT Agro-Insight report v13 3may 18.pdf](#)  
1,240 × 1,754,  
98 pages; 2.15 MB



- [EXT Strategic Action plan for Extension Methodology rev 15may 18.pdf](#)  
1,240 × 1,754,  
14 pages; 867 KB



- [Feb 15 BGP LCS Guidelines.pdf](#)  
1,275 × 1,756,  
30 pages; 4.58 MB



- [Feb 15 CAWM](#)



[P30 baseline  
pilot martina  
groenemeijer feb  
15.pdf](#) 1,240 ×  
1,754, 52 pages;  
6.08 MB



•

[Final Report  
Collective  
Vegetable  
Cultivation  
27may 21.pdf](#)  
1,275 × 1,650, 5  
pages; 1.39 MB



•

[Final Report  
Covid-19 survey  
3jun 21.pdf](#)  
1,275 × 1,650, 8  
pages; 734 KB



•

[Gender 11mar  
14 gender  
approach based  
on inception  
report.pdf](#) 1,754  
× 2,480, 12  
pages; 935 KB



•

[Gender 12nov  
13 network  
meeting gender  
water  
management  
and food  
security.pdf](#)  
1,240 × 1,754,  
15 pages; 2.34  
MB



•

[Gender 2016  
report on pilot  
GLD training.pdf](#)  
1,240 × 1,754, 8  
pages; 1.09 MB



•

[Gender 21jan 18  
rapid  
assessment GLD  
mourie  
nishad.pdf](#) 1,240  
× 1,754, 12  
pages; 952 KB



•

[Gender 23oct 17  
antiharassment  
policy.pdf](#) 1,240  
× 1,754, 2  
pages; 546 KB



•

[Gender 24may  
19 women's  
workload.pdf](#)  
1,240 × 1,754,  
15 pages; 196  
KB



•

[Gender 26jul 19  
impact of HL  
poultry  
rearing.pdf](#)  
1,240 × 1,754, 3  
pages; 494 KB



•

[Gender 30may  
16 feedback on  
pilot GLD and 3](#)

[month  
planning.pdf](#)  
1,240 × 1,754, 7  
pages; 798 KB



•

[Gender 3apr 17  
guideline for  
courtyard  
sessions.pdf](#)  
1,240 × 1,754, 6  
pages; 943 KB



•

[Gender 7nov 16  
feminization of  
agriculture.pdf](#)  
1,240 × 1,754, 4  
pages; 821 KB



•

[Gender 9nov 18  
pilot joint UP  
WMG WE  
workshops.pdf](#)  
1,240 × 1,754, 8  
pages; 1.01 MB



•

[Gender IFMC-II proposed Gender Strategy Final.pdf](#) 1,240 × 1,754, 7 pages; 982 KB



•

[Gender KNKS apr 17 GLD report with annexes.pdf](#) 1,275 × 1,650, 290 pages; 2.26 MB



•

[GoN logframe Program Document aug 12.pdf](#) 1,239 × 1,754, 2 pages; 85 KB



•

[GoN Program](#)

[Document BGP](#)

[28Aug12.pdf](#)

1,239 × 1,754,  
111 pages; 3.77  
MB



[IR Inception](#)

[Report, revised](#)

[March 2014.pdf](#)

1,275 × 1,650,  
326 pages; 4.35  
MB



[MF P2 master](#)

[file 29jul 15.pdf](#)

1,240 × 1,754,  
81 pages; 2.8  
MB



[MF P22 master](#)  
[file 15jun 14.pdf](#)

1,240 × 1,754,  
79 pages; 2.11  
MB

Master File  
On  
Folder 26  
Blue Gold Program  
Khulna

Master File  
On  
Folder 29  
Blue Gold Program  
Khulna



[MF P26 master  
file 30sep 15.pdf](#)  
1,240 × 1,754,  
68 pages; 2.1  
MB

Master File  
On  
Folder 29  
Blue Gold Program  
Khulna

Master File  
On  
Folder 30  
Blue Gold Program  
Khulna



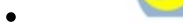
[MF P29 master  
file 4nov 14.pdf](#)  
1,240 × 1,754,  
104 pages; 3.97  
MB

Master File  
On  
Folder 30  
Blue Gold Program  
Khulna

Master File  
On  
Folder 30  
Blue Gold Program  
Khulna



[MF P30 master  
file 15oct 14.pdf](#)  
1,240 × 1,754,  
127 pages; 3.82  
MB



[MF P31-part  
master file 6apr  
15.pdf](#) 1,240 ×  
1,754, 87 pages;  
5.12 MB



- [MF P43 1A](#)  
[master file](#)  
[15.pdf](#) 1,275 × 1,650, 123 pages; 2.51 MB



- [MF P43 2A](#)  
[master file](#)  
[26apr 15.pdf](#) 1,275 × 1,650, 154 pages; 2.51 MB



- [MF P43 2B](#)  
[master file](#)  
[7jul 15.pdf](#) 1,275 × 1,650, 105 pages; 3.47 MB



- [MF P43 2D](#)  
[master file](#)  
[20apr 15.pdf](#) 1,240 × 1,754,



201 pages; 4.51  
MB

## Master File

Public 43.02



Project No.  
43.02

•

[MF P43 2E](#)  
[master file 24jun](#)  
[15.pdf](#) 1,240 ×  
1,754, 88 pages;  
2.37 MB

A table with four columns: Name, Value, % of Total, and % of Total Value. The rows are color-coded in green and orange. The table lists various categories and their corresponding values and percentages.

•

[MF P43 2F](#)  
[27sep 18.pdf](#)  
1,240 × 1,754,  
119 pages; 3.37  
MB



•

[O&M 16jul 19](#)  
[evolution of](#)  
[catchment](#)  
[planning.pdf](#)  
1,240 × 1,754, 2  
pages; 587 KB



•

[OT AIWW and](#)

[Water  
Management  
Policy  
Approaches in  
Netherlands and  
UK  
1-12nov2015.pdf](#)

1,239 × 1,754,  
156 pages; 5.25  
MB



•

[OT DWA  
Advanced Level  
Design and LCC  
syllabus.pdf](#)

1,240 × 1,754,  
26 pages; 694  
KB



•

[OT DWA Mission  
Report -  
Reconnaissance  
mission  
Bangladesh -  
16-28 January  
2015 ....pdf](#)

1,239 × 1,754,  
31 pages; 486  
KB



•

[OT Hague  
Academy Multi-  
level Water  
Governance  
26Oct-6Nov2015  
.pdf](#) 1,240 ×  
1,754, 26 pages;  
868 KB



•

[OT Hague  
Academy Multi-  
Level Water  
Governance  
4-15Apr2016.pdf](#)  
1,240 × 1,753,  
29 pages; 1.41  
MB



•

[OT int7 Proposal  
Training Life  
Cycle Costing  
and Design for  
Water  
Systems.pdf](#)  
1,240 × 1,754, 6  
pages; 108 KB



•

[OT int8 SIIL  
workshop  
bangkok Polder](#)

[tidings v1 nr2  
dec 16.pdf](#) 1,275  
× 1,650, 16  
pages; 6.89 MB



•

[OT int9 OPPO  
course  
Wageningen  
syllabus.pdf](#)  
1,240 × 1,754, 2  
pages; 103 KB



•

[OT Study tour  
Indonesia  
19-27Apr2015.p  
df](#) 1,275 ×  
1,650, 5 pages;  
173 KB



•

[P29 BGP erosion  
presentation.pdf](#)  
1,754 × 1,240, 9  
pages; 3.49 MB



•

[P29 BGP  
preemptive  
actions to avoid  
erosion damage  
25apr 17.pdf](#)  
1,240 × 1,754;  
489 KB



•

[P29 Breach-  
Background  
Note.pdf](#) 1,275  
× 1,650, 7  
pages; 1.08 MB



•

[P29 BWDB  
design drawings  
groynes 1nov  
16.pdf](#) 1,770 ×  
1,297, 9 pages;  
4.69 MB



•

[P29 Deltares  
Erik  
Mosselmann P29  
Review of IWM  
study 8jan  
16.pdf](#) 1,240 ×  
1,753, 23 pages;  
683 KB



- [P29 Deltares](#)  
[review of BWDB](#)  
[designs 30may](#)  
[17.pdf](#) 1,240 ×  
1,754, 30 pages;  
1.53 MB



- [P29 FRERMIP](#)  
[Final report](#)  
[Emergency](#)  
[protection works](#)  
[P29 v5 23jun](#)  
[18.pdf](#) 1,240 ×  
1,754, 36 pages;  
3.09 MB



- [P29 FRERMIP](#)  
[Top Blocked](#)  
[Spur Numerical](#)  
[Modelling v3](#)  
[12jul 17.pdf](#)  
1,239 × 1,754,  
21 pages; 3.2  
MB



•

[P29 FRERMIP](#)  
[visit 13](#)  
[March2017 v3](#)  
[11apr 17.pdf](#)  
1,239 × 1,754,  
17 pages; 1,005  
KB



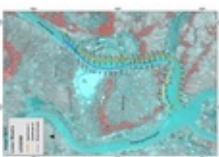
•

[P29 IWM Final](#)  
[Report polder29](#)  
[red 24may](#)  
[16.pdf](#) 1,239 ×  
1,754, 118  
pages; 4.02 MB



•

[P29 IWM Lower](#)  
[Bhadra Survey](#)  
[Report 3rd Cycle](#)  
[nov 17.pdf](#) 1,240  
× 1,754, 121  
pages; 14.29 MB



•

[P29 Lower](#)

[Bhadra float tracking Ghani 24apr 17.pdf](#)  
1,754 × 1,239;  
340 KB



•

[P29 Lower Bhadra IWM borehole investigation 23jul 17.pdf](#)  
1,275 × 1,650,  
43 pages; 1.42 MB



•

[P29 Lower Bhadra IWM river survey report 23jul 17.pdf](#) 1,275 × 1,650, 90 pages; 8.99 MB



•

[PDP P22 5feb 17.pdf](#) 1,240 × 1,754, 35 pages; 2.09 MB





- [PDP P25 22mar 17.pdf](#) 1,240 × 1,754, 34 pages; 1.16 MB



- [PDP P26 5feb 17.pdf](#) 1,240 × 1,754, 35 pages; 2.12 MB



- [PDP P27-1 22mar 17.pdf](#) 1,240 × 1,754, 34 pages; 1.17 MB



- [PDP P27-2 15jun 17.pdf](#) 1,240 × 1,754, 33 pages; 1.93 MB



•

[PDP P28-1](#)

[22mar 17.pdf](#)

1,240 × 1,754,

35 pages; 1.16

MB



•

[PDP P28-2 15jun](#)

[17.pdf](#) 1,240 ×

1,754, 34 pages;

2.14 MB



•

[PDP P29 5feb](#)

[17.pdf](#) 1,240 ×

1,754, 36 pages;

2.5 MB



•

[PDP P30 5feb](#)

[17.pdf](#) 1,240 ×

1,754, 37 pages;

2.4 MB



- [PDP P31part 5feb 17.pdf](#)  
1,240 × 1,754,  
35 pages; 2.02 MB



- [PDP P34-2part 20aug 17.pdf](#)  
1,240 × 1,754,  
35 pages; 2.48 MB



- [PDP P43-1A 5feb 17.pdf](#) 1,240 × 1,754, 35 pages; 2.49 MB



- [PDP P43-2A 5feb 17.pdf](#) 1,240 × 1,754, 36 pages; 2.67 MB



- [PDP P43-2B 5feb 17.pdf](#) 1,240 × 1,754, 38 pages; 2.56 MB



- [PDP P43-2D 5feb 17.pdf](#) 1,240 × 1,754, 36 pages; 3.22 MB



- [PDP P43-2E 5feb 17.pdf](#) 1,240 × 1,754, 37 pages; 2.32 MB



- [PDP P43-2F 5feb 17.pdf](#) 1,240 × 1,754, 37 pages; 1.88 MB



[PDP P47-3](#)

[27aug 17.pdf](#)

1,240 × 1,754,  
33 pages; 2.11  
MB



[PDP P47-4](#)

[27aug 17.pdf](#)

1,240 × 1,754,  
36 pages; 2.57  
MB



[PDP P55-2A](#)

[15jun 17.pdf](#)

1,240 × 1,754,  
33 pages; 2.33  
MB



[PDP P55-2C](#)

[15jun 17.pdf](#)

1,240 × 1,754,  
36 pages; 2.61  
MB



- 

[PP TA ARM](#)  
[Discussion](#)  
[Paper 2016 1oct](#)  
[16.pdf](#) 1,239 ×  
1,754, 85 pages;  
812 KB



- 

[PP TA ARM](#)  
[position paper](#)  
[2017 18nov](#)  
[17.pdf](#) 1,240 ×  
1,754, 82 pages;  
9.32 MB



- 

[PP TA ARM](#)  
[position paper](#)  
[2018 3nov](#)  
[18.pdf](#) 1,240 ×  
1,754, 265  
pages; 31.43 MB



- 

[PR 28jul 20](#)  
[HYPR January-](#)

[June 2020.pdf](#)

1,240 × 1,754,  
96 pages; 1.52  
MB



[PR Apr-Jun 2014](#)

[4aug 14.pdf](#)

1,275 × 1,650,  
96 pages; 1.06  
MB



[PR Apr-Jun 2015](#)

[5aug 15.pdf](#)

1,240 × 1,754,  
98 pages; 4.11  
MB



[PR Apr-Sep 2013](#)

[10dec 13.pdf](#)

1,240 × 1,754,  
49 pages; 1.5  
MB



[PR jan jun 2016](#)  
[HYPR Jan-Jun](#)  
[2016 9sep](#)  
[16.pdf](#) 1,240 ×  
1,754, 84 pages;  
3.36 MB



•

[PR jan jun 2017](#)  
[HYPR jan jun](#)  
[2017 FINAL.pdf](#)  
1,240 × 1,754,  
56 pages; 2.37  
MB



•

[PR jan jun 2018](#)  
[HYPR Jan-June](#)  
[2018 26jul](#)  
[18.pdf](#) 1,240 ×  
1,754, 76 pages;  
2.35 MB



•

[PR jan jun 2019](#)  
[Half Yearly](#)  
[Progress Report](#)  
[Jan-Jun](#)  
[2019.docx.pdf](#)  
1,240 × 1,754,  
98 pages; 2.85  
MB





•

[PR Jan-Mar 2014](#)  
[14may 14.pdf](#)  
1,240 × 1,754,  
77 pages; 1.89  
MB



•

[PR Jan-Mar](#)  
[2015.pdf](#) 1,240  
× 1,754, 88  
pages; 3.6 MB



•

[PR jul dec 2015](#)  
[HPR-Half-Yearly](#)  
[Progress Report](#)  
[Jul-Dec](#)  
[2015.Final.pdf](#)  
1,240 × 1,754,  
114 pages; 3.83  
MB



•

[PR jul dec 2016](#)  
[HYPR July to](#)  
[Dec 2016.04Aprl](#)

[17.pdf](#) 1,240 ×  
1,754, 91 pages;  
5.05 MB



•

[PR jul dec 2017](#)  
[BGP HYPR July-](#)  
[Dec 2017.pdf](#)  
1,240 × 1,754,  
67 pages; 1.89  
MB



•

[PR jul dec 2018](#)  
[BGP HYPR Jul-](#)  
[Dec 2018 final](#)  
[opt.pdf](#) 1,240 ×  
1,754, 86 pages;  
2.81 MB

(previous page) ([next page](#))

Retrieved from "<https://www.bluegoldwiki.com/index.php?title=Category:Report&oldid=2642>"

## Namespaces

- [Category](#)
- [Discussion](#)

## Variants

### [Categories:](#)

- [Keywords used in files](#)
- [Files by publication type](#)

This page was last edited on 17 June 2020, at 06:19.

# Blue Gold Program Wiki

The wiki version of the Lessons Learnt Report of the Blue Gold program, documents the experiences of a technical assistance (TA) team working in a development project implemented by the Bangladesh Water Development Board (BWDB) and the Department of Agricultural Extension (DAE) over an eight+ year period from March 2013 to December 2021. The wiki lessons learnt report (LLR) is intended to complement the BWDB and DAE project completion reports (PCRs), with the aim of recording lessons learnt for use in the design and implementation of future interventions in the coastal zone.

- [Privacy policy](#)
- [About Blue Gold Program Wiki](#)
- [Disclaimers](#)

Developed and maintained by Big Blue Communications for Blue Gold Program



[Blue Gold Program Wiki](#)